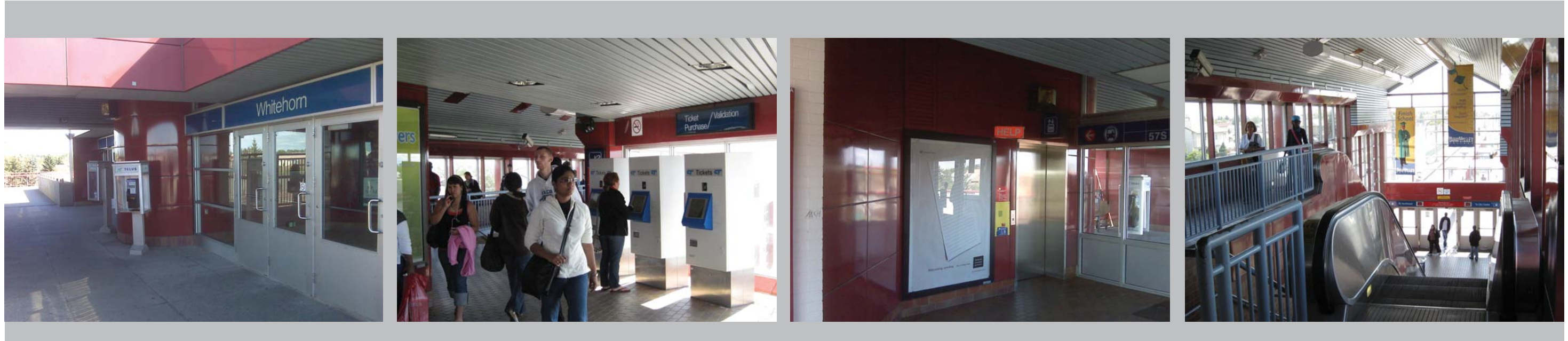


PROJECT SCOPE AND SCHEDULE



Project Scope (subject to final cost review)

- Platform replacement & platform extension to accommodate 4 cars from current 3 cars
- New canopy (1/2 of platform) with shelters
- Accessibility/security within station – elevator relocation & improve sight lines
- Mechanical & electrical upgrades
- Interior finishes upgrades
- Potential new pedestrian crossing at south end of platform (currently under study)

Project Schedule

Spring 2010

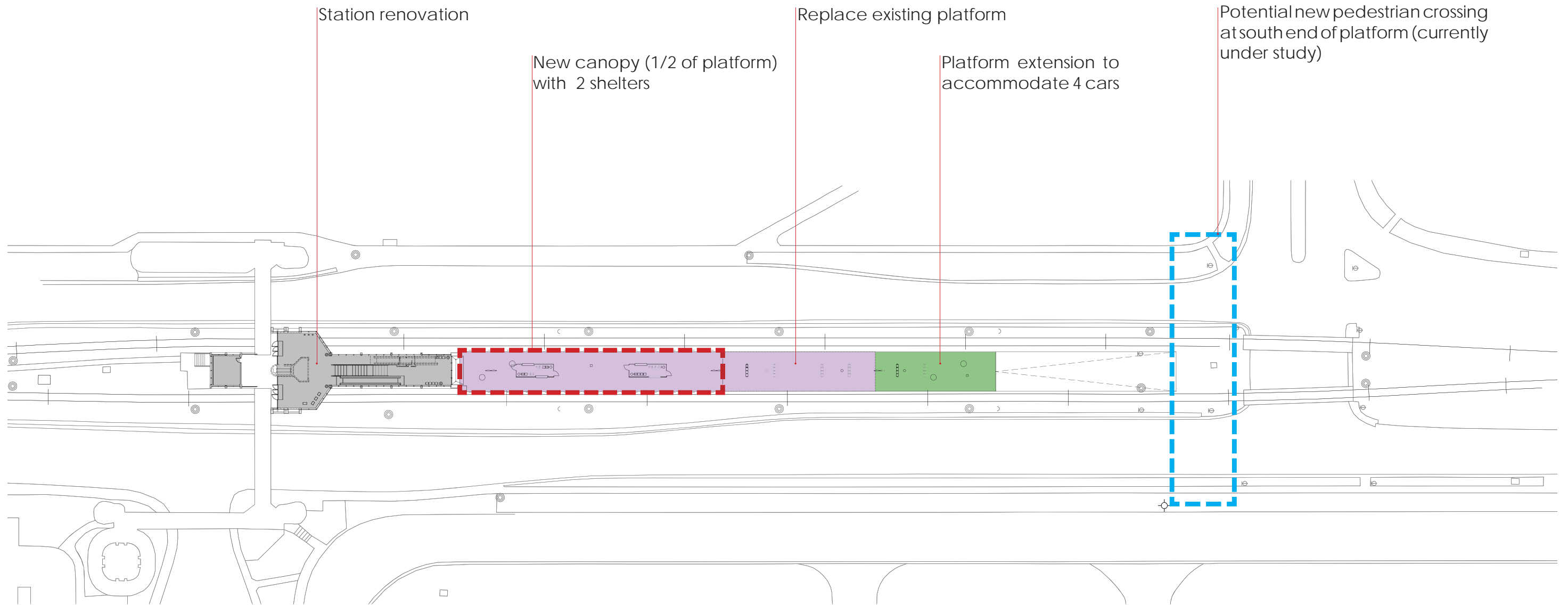
- Detailed schedule preparation
- Complete drawings
- Preconstruction assessments

Summer 2010 to Spring 2011

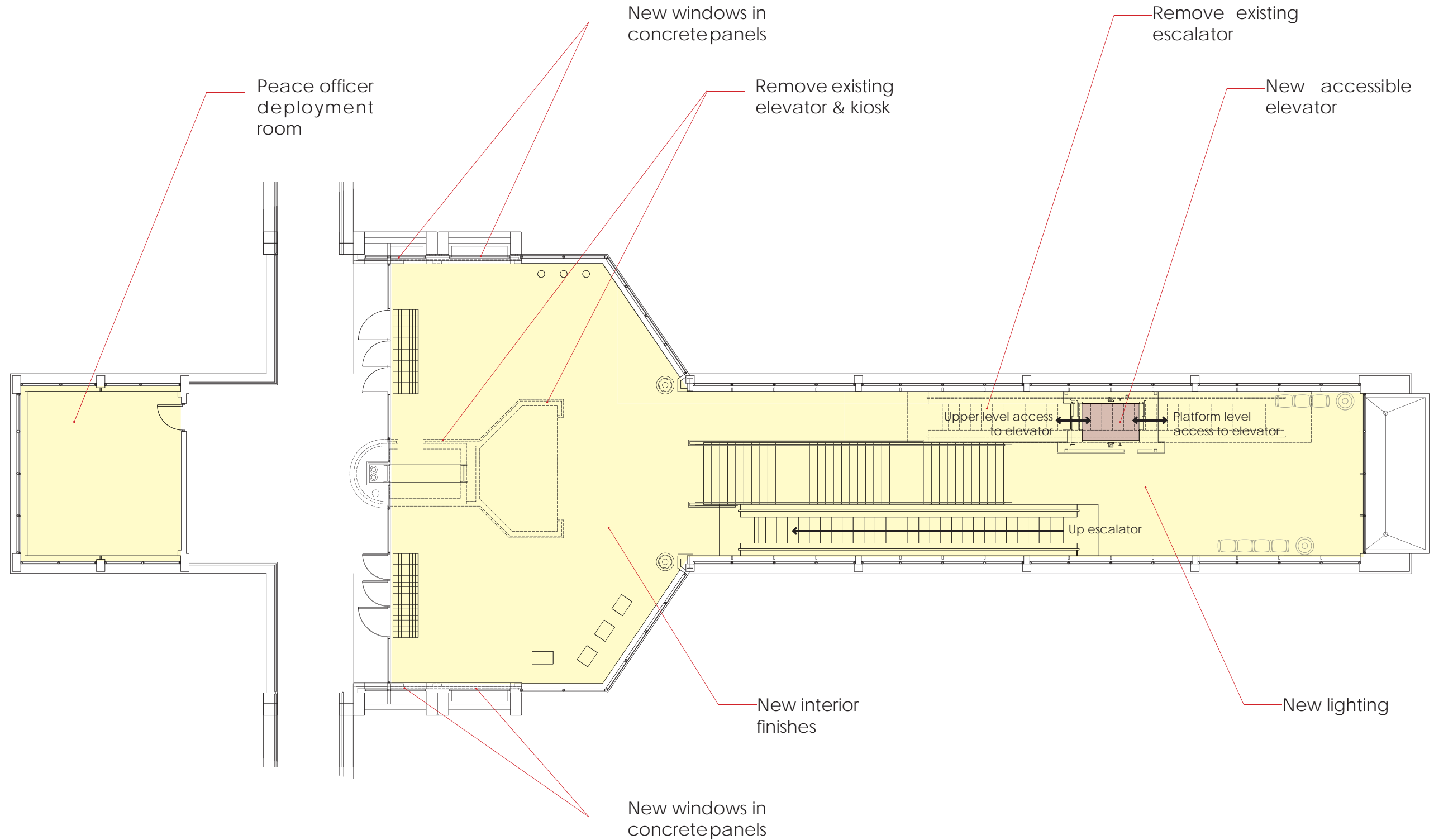
- Construction



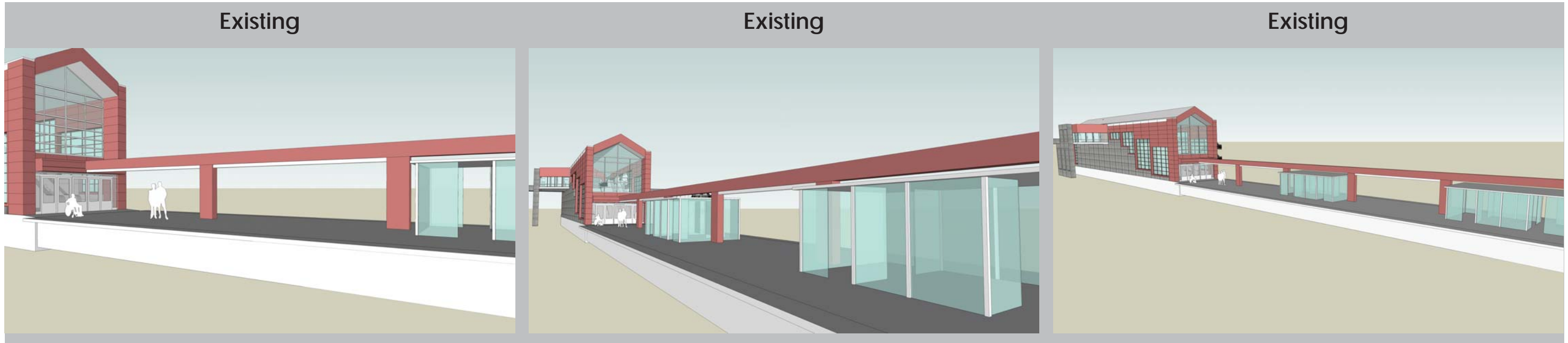
PROPOSED SITE & PLATFORM PLAN



PROPOSED STATION RENOVATION PLAN



BEFORE AND AFTER COMPARISON PLATFORM & CANOPY



Proposed



Proposed



Proposed



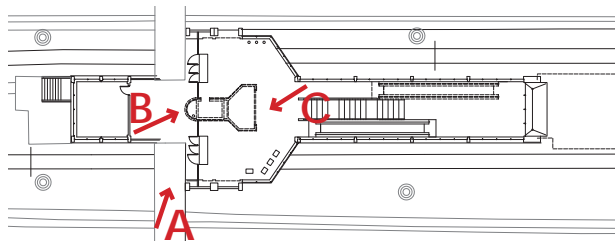
- New canopy with new shelters



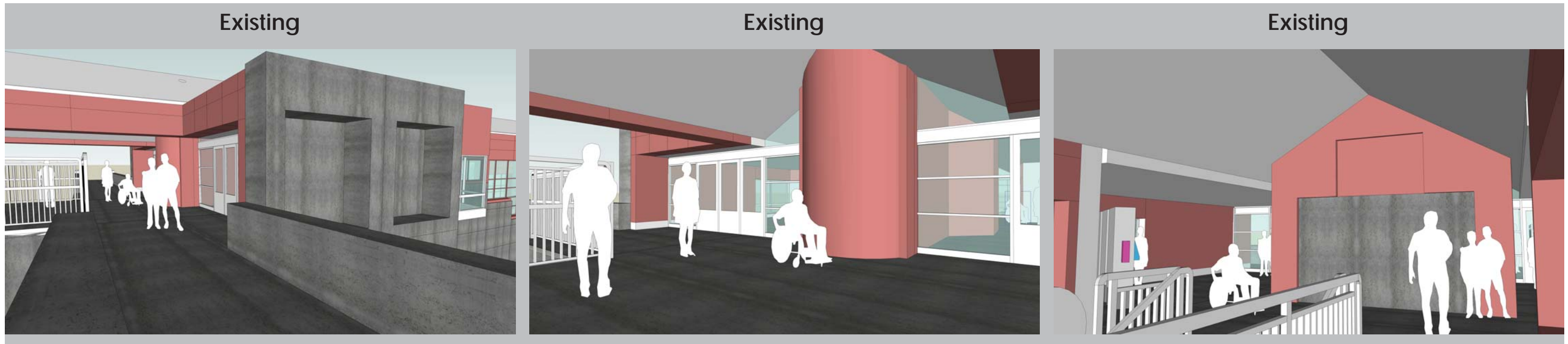
- New canopy cover 1/2 of extended platform



- Platform replacement & platform extension to accommodate 4 cars from current 3 cars



BEFORE AND AFTER COMPARISON STATION



A 
Proposed



- New windows allow view into station

B 
Proposed

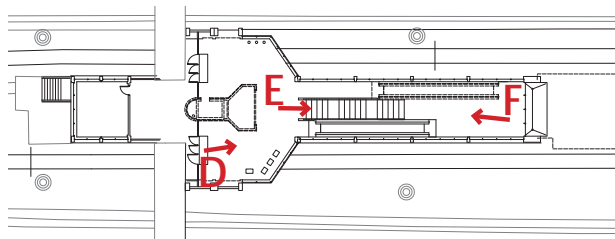


- Relocate existing elevator
- Improve sight lines into station

C 
Proposed



- Relocate existing elevator
- Improve sight lines in station



BEFORE AND AFTER COMPARISON STATION



D



Proposed

E



Proposed

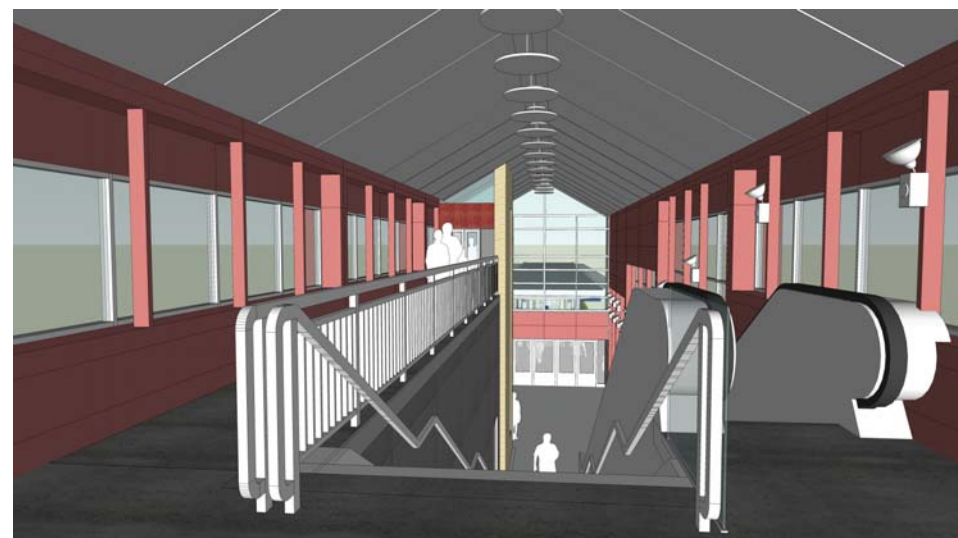
F



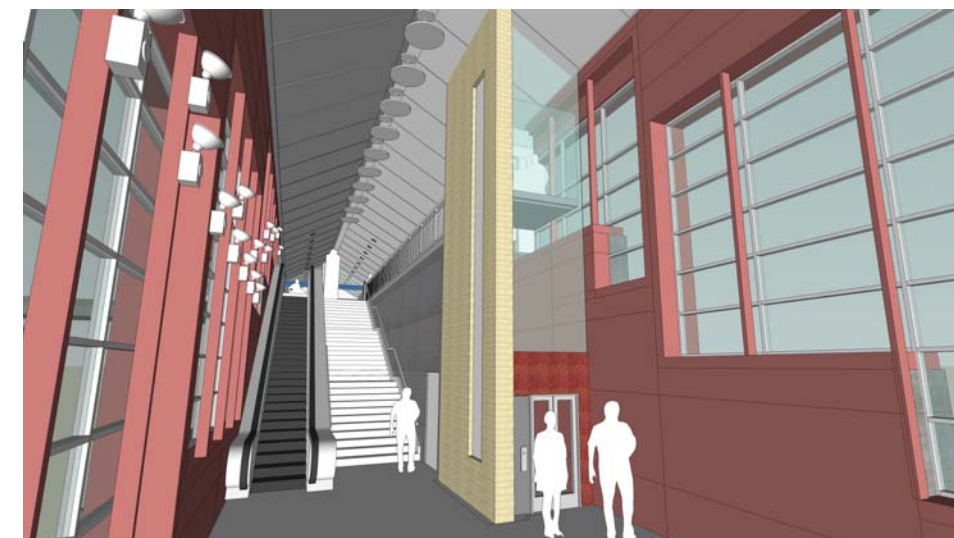
Proposed



- Relocate existing elevator
- Improve accessibility and security within Station



- Relocated elevator, improve accessibility
- New lighting



- Relocated elevator, improve accessibility
- New lighting